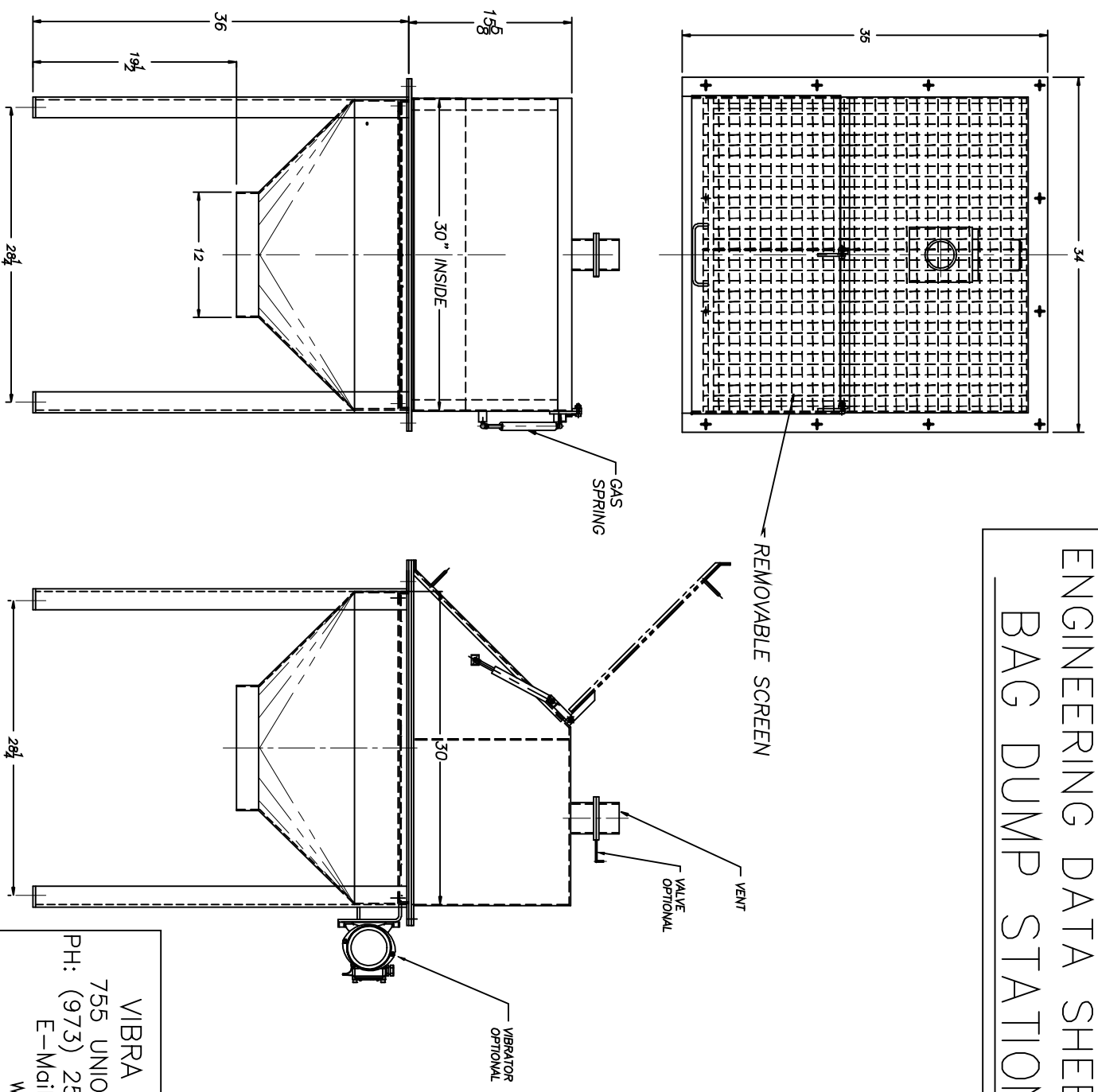


# ENGINEERING DATA SHEET BAG DUMP STATION

DOCUMENT NO. S160  
 N:\SALES\Document S160  
 DWN.: MJM 8/22/2011



VIBRA SCREW INCORPORATED  
 755 UNION BLVD., TOTOWA N.J. 07512  
 PH: (973) 256-7410 FAX: (973) 256-7567  
 E-Mail: info@vibrascREWinc.com  
 www.vibrascREWinc.com